



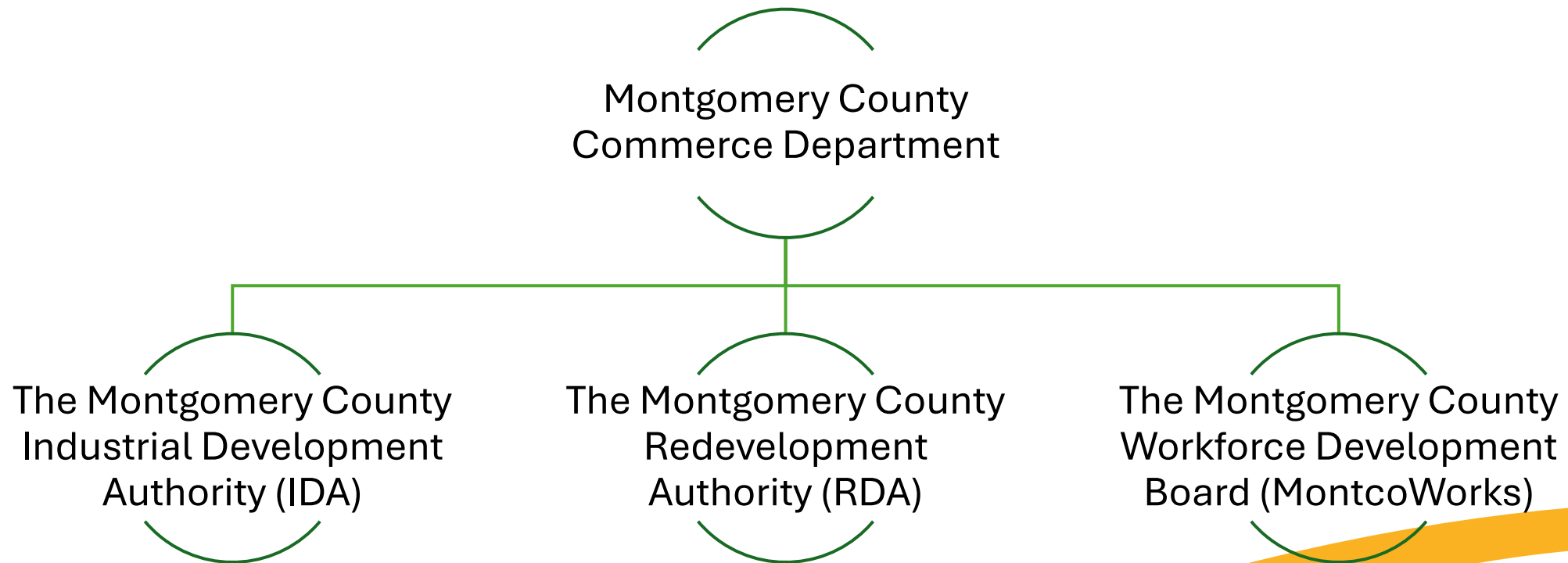
**MONTGOMERY
COUNTY, PA**
COMMERCE DEPARTMENT

Montgomery County Commerce Department



Commerce Department Overview

The Commerce Department utilizes a unified approach to economic development and workforce development in Montgomery County. Several entities are housed within the Commerce Department.



Commerce Department Services



Making Connections

It is essential that we continue to foster and expand our network of partners and stakeholders to provide versatile business support.

- Small Business Development Centers
- Townships/Municipalities
- Chambers of Commerce
- State Offices & Departments
- PA CareerLink Business Services Team
- County Departments
- Valley Forge Tourism and Convention Board
- Ben Franklin Technology Partners
- Industrial Resource Center
- Regional Government Partners
- Non-Profits
- Schools and Colleges

Finance Programs



MontcoForward Loan Program (MFL) is designed to help businesses grow, increase their productivity, and maximize the value of their investments in Montgomery County. Businesses and their banks are encouraged to contact the Commerce Department to discuss how best a loan from this program can be incorporated into funding a project.

- The program can provide up to \$1,000,000 to each qualified project.
- Fixed rate and fixed term (varies by use of funds).
- Four categories:
 - Participation Loans
 - Sole-Lender Loans
 - Agriculture Loans
 - Housing Affordability Loans

MontcoForward Loan Program Information



Finance Programs

PA Catalyst Loan Fund

The PA Catalyst Loan Fund is a low-interest, flexible loan, that aims to fund and empower historically underserved entrepreneurs—including minority-owned, women-owned, and Veteran owned businesses—with the capital they need to expand operations, invest in equipment, or stabilize their organizations.

Pennsylvania Industrial Development Authority (PIDA)

- The Pennsylvania Industrial Development Authority (PIDA) provides low-interest loans and lines of credit to businesses that commit to creating and retaining full-time jobs in PA through projects including property and/or equipment purchases. This is administered by the MCRDA.
- Below market interest rates tied to the 10-year Treasury (varies by use of funds).
- The program can provide up to \$2,250,000 for qualified projects (varies by use of funds).
- Job creation/retention requirement.

Finance Programs

Commercial Property Assessed Clean Energy (C-PACE)

The (C-PACE) Program assists Montgomery County commercial businesses, agriculture interests, and nonprofits to finance clean energy and water efficiency projects with long-term and low-cost financing. The newly expanded program also allows for the financing of improvements to multi-tenant residential properties as well as improvements to all eligible properties that increase environmental resiliency and HVAC enhancements.

Montgomery County Industrial Development Authority (MCIDA)

The Montgomery County Industrial Development Authority (MCIDA) assists manufacturing firms, nonprofit organizations, educational institutions, health care organizations, water treatment plants, and pollution control facilities with meeting capital needs for large-scale projects. The MCIDA process is designed to secure significant capital at competitive rates for borrowers and benefit the lender through the utilization of **tax exempt bonds**.

Additional Resources

Montco Site Select Program

Looking for information on available sites? Complete our Montco Site Select Inquiry Form and we will prepare a property report based on your parameters of available sites in the county. Additionally, we will confidentially share your property search inquiry with a network of real estate and development professionals to get you the latest information on available or soon to be available sites and buildings.

Montco Site Select

Montgomery County, PA



**Site Select
Inquiry Form**



THRIVE

The THRIVE program is designed to help municipalities better understand the current conditions of a selected commercial corridor. The program includes coordination and collaboration with relevant planning and infrastructure partners.

Using mobile location data, market reports, and demographic analysis, the program will produce detailed reports for participating communities. These reports will provide:

- An analysis of existing commercial corridor conditions and market trends;
- Data-driven insights on consumer activity and demographic patterns;
- Recommendations for addressing retail vacancies; and
- Strategies to strengthen the corridor's identity, improve placemaking, and develop a recognizable brand for the commercial corridor.

Additional Resources

MontcoForward – Live, Work, Learn, & Invest

The **MontcoForward.org** website provides an Insight Tool for businesses already established in Montgomery County or for businesses thinking of relocating or expanding here. The information and data compiled shares why Montgomery County is the best place for you and your business to live, work, learn, and invest.

Business Resource Page

A wide variety of resources to support your business can be found on the Business Resource page.

Scan the QR code to visit.



PA CareerLink® Montgomery County

PA CareerLink® Business Services:

- Support with finding, screening, and contacting potential candidates
- Individualized hiring events at PA CareerLink® Montgomery County or your location
- Connections to Industry Partnerships, Apprenticeship Coordinators and other workforce organizations
- Access to labor market information

Learn more at MontgomeryCountyPA.gov/CareerLink

PA CareerLink® Montgomery County

On-The-Job Training

- Build your future workforce
- Receive partial wage reimbursement for the training of new hires
- Training can last up to six months
- Training provided by the employer as part of the onboarding and training of a new hire

Incumbent Worker Training

- Build up your current employees
- Partial Reimbursement for the cost of trainings meant to upskill or retain your current workforce
- Training is provided by a third party for the employer's staff

Doing Business with the County



**MONTGOMERY
COUNTY**
PENNSYLVANIA

Vendor Registration & Solicitations

- Montgomery County uses Bonfire, a web-based eProcurement platform, for all solicitations.
- Vendors must register with Bonfire to:
 - View and download solicitation documents
 - Submit proposals
 - Receive notifications of future opportunities

Register and view current solicitations here:



montcopa.bonfirehub.com/portal

We encourage all vendors to register to stay informed about upcoming bids and contract opportunities.



**MONTGOMERY
COUNTY, PA**
COMMERCE DEPARTMENT

Connect With Us to Learn More

Kaylyn Langdon

Senior Business Assistance Coordinator

kaylyn.langdon@montgomerycountypa.gov

**Business Assistance
Request Form**

