



---

 **SCRA**

The logo consists of three interlocking chevron shapes: an orange one on the left, a blue one in the middle, and a green one on the right. To the right of this graphic, the letters 'SCRA' are written in a large, bold, black sans-serif font.

OUR HISTORY & MISSION

---

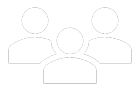


ABOUT US

## OUR MISSION



# SCRA Fosters South Carolina's Innovation Economy



INDUSTRY

We support entrepreneurs,  
enable academic research and its  
commercialization, and connect  
industry to innovators.

## OUR ECONOMIC IMPACT

---



4,255

SOUTH CAROLINA-BASED  
JOBS SUPPORTED BY  
SCRA OPERATIONS

\$719  
Million

SCRA'S ECONOMIC  
IMPACT ON SOUTH  
CAROLINA IN FY16

42

COMPANIES HAVE OFFICES IN  
SCRA FACILITIES



# ENTREPRENEURS

## HOW WE HELP: SC LAUNCH PROGRAM

---



- ✓ Provide mentoring, grants, investments and other funding to early-stage technology companies
- ✓ Funding for the program comes from contributions to the Industry Partnership Fund

- ✓ Companies in the following industries:
  - Life Sciences
  - Advanced Materials/Manufacturing
  - Information Technology
- ✓ Companies must reside in SC

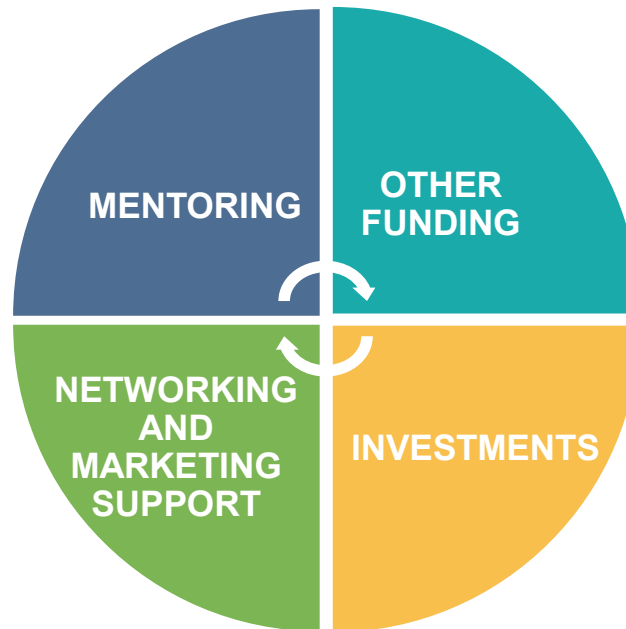
# TYPES OF SUPPORT



MENTORING AND SUPPORT FROM SC LAUNCH TEAM AND RESOURCE PARTNERS



RESOURCE PARTNERS, NETWORKING EVENTS AND MARKETING SUPPORT



SBIR/STTR MATCHES, ASAP GRANTS, PROJECT DEMONSTRATION FUNDS AND RELOCATION ASSISTANCE



AFTER DUE DILIGENCE, COMPANIES MAY RECEIVE BOARD-APPROVED LOANS



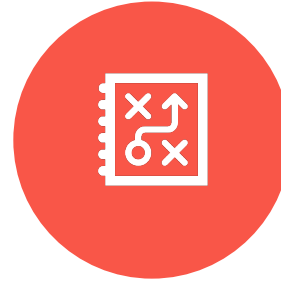
# TYPES OF GRANTS

---



## SBIR/STTR Phase I Matching Grant Up to \$50,000

Each company is limited to two SBIR Matching Grants in the company's lifetime.



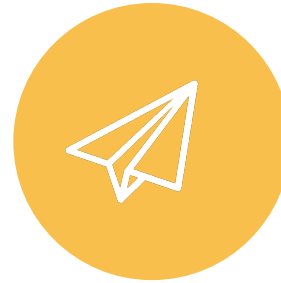
## Project Development Fund Up to \$25,000

Community-based, early-stage development funding to qualified client companies.



## Academic Startup Assistance Program Up to \$25,000

Companies advancing academic technologies and/or intellectual property.

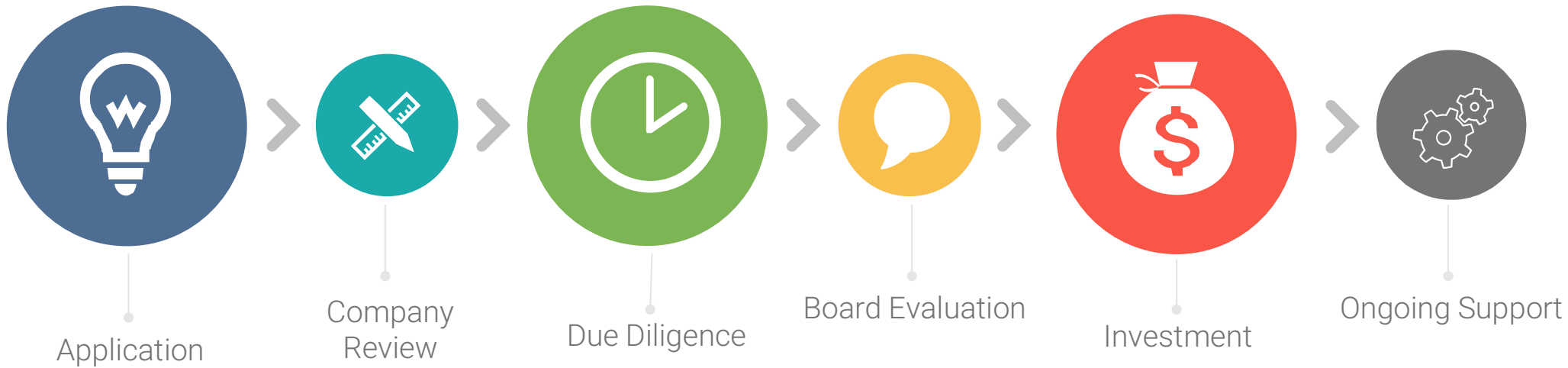


## Acceleration Grant Up to \$50,000

Each company is eligible for one grant during its lifetime.

# SC LAUNCH INVESTMENT TIMELINE

---



# CASE STUDY: TERRESSENTIA



Terressentia's patented process is a carefully controlled application of ultrasonic energy, heat, oxygen and other factors designed to improve the quality and taste of distilled spirits.



SC Launch made an early investment in Terressentia and followed with an additional round of funding to advance R&D and sales efforts.



# CASE STUDY: SERVOSITY



Servosity delivers mission-critical disaster recovery as a service to managed service providers and IT resellers.



During a disaster recovery situation, the technology allows for streaming of operating systems, so information is immediately received with no wait time for downloads.



## HEAR THEIR STORY: KIYATEC

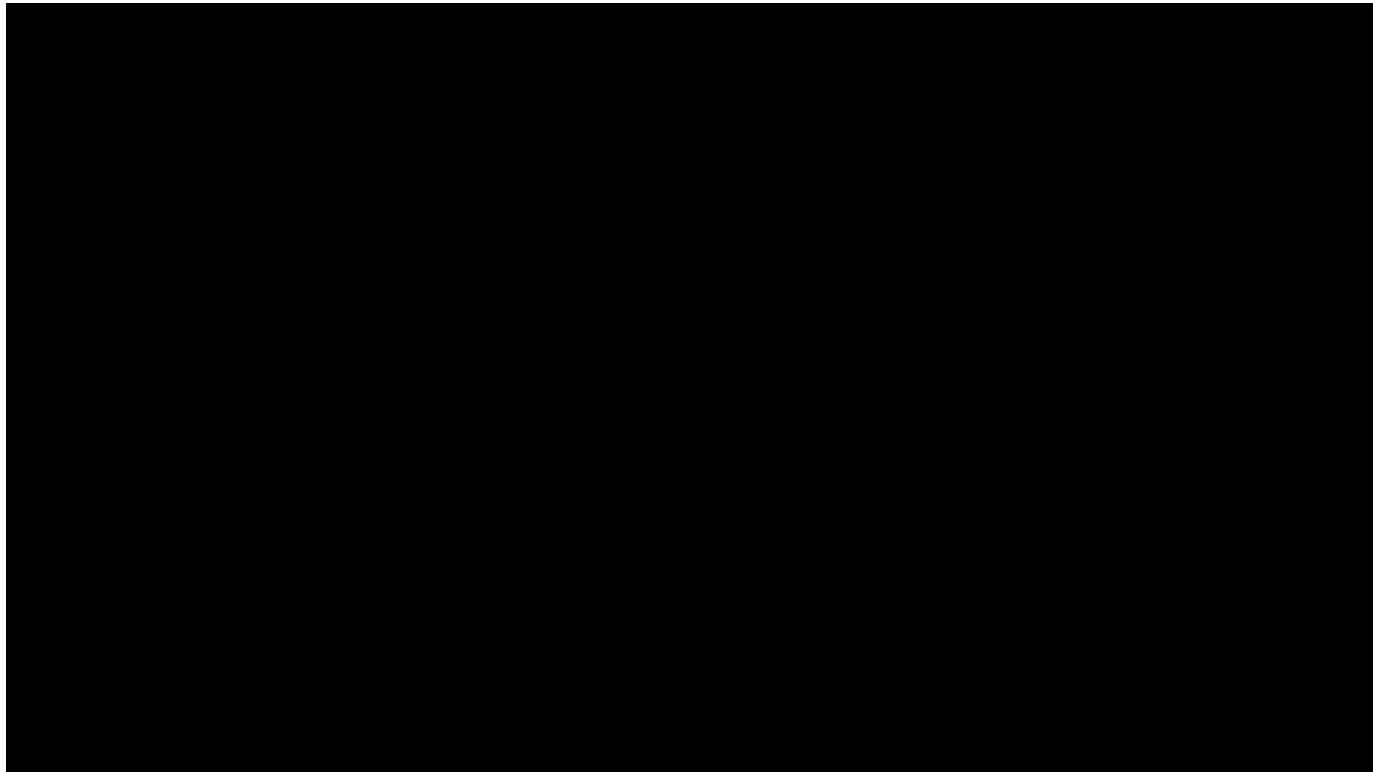
---



[https://www.youtube.com/watch?v=8BIIQ1P\\_PUo](https://www.youtube.com/watch?v=8BIIQ1P_PUo)

## THEIR STORY: PEC360

---



<https://youtu.be/8eP4ECkdrF0>

## BY THE NUMBERS

---



2,092

SOUTH CAROLINA-BASED  
JOBS CREATED BY SC  
LAUNCH COMPANIES

\$652  
Million

FOLLOW-ON FUNDING  
RECEIVED BY SC  
LAUNCH COMPANIES

\$81,421

AVERAGE SALARY OF  
JOBS CREATED BY SC  
LAUNCH COMPANIES



ACADEMIA

# ACADEMIA SUPPORT

---



Strategic Collaboration Agreement



Support startups and entrepreneurs  
with academic affiliations



Invest in shared infrastructure &  
pilot projects

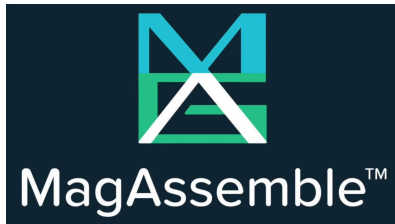
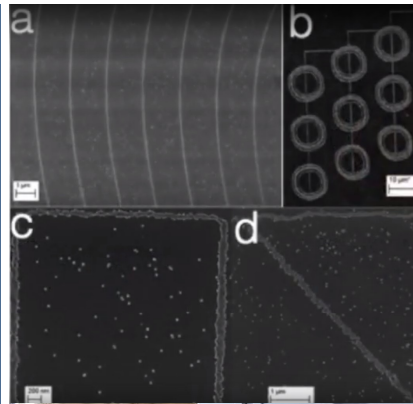


Establish Collaboration  
Centers

# CASE STUDY: MAGASSEMBLE



MagAssemble is based on IP from USC. The company developing next generation optics. Their process creates designs for optical systems such as fiber optics, lenses and optical sensors.

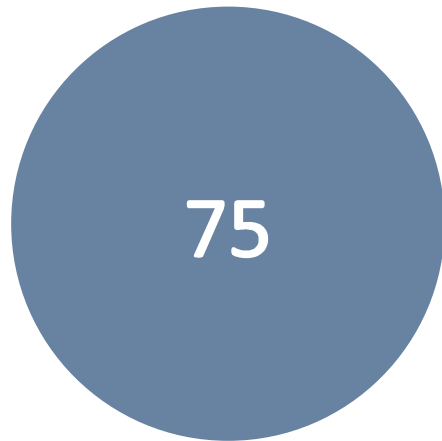


The company recently received an Acceleration Grant, a USAP and SBIR/STTR grant matching funds. In 2016 they were awarded an NSF SBIR Phase II Award.



## BY THE NUMBERS: ACADEMIA SUPPORT

---



NUMBER OF ACADEMIC  
INSTITUTION-AFFILIATED  
COMPANIES  
SUPPORTED



ACADEMIC INSTITUTION-  
AFFILIATED COMPANIES  
RECEIVING GRANTS



ACADEMIC INSTITUTION-  
AFFILIATED COMPANIES  
RECEIVING  
INVESTMENTS



INDUSTRY

# CONNECTING INDUSTRY TO INNOVATORS

---

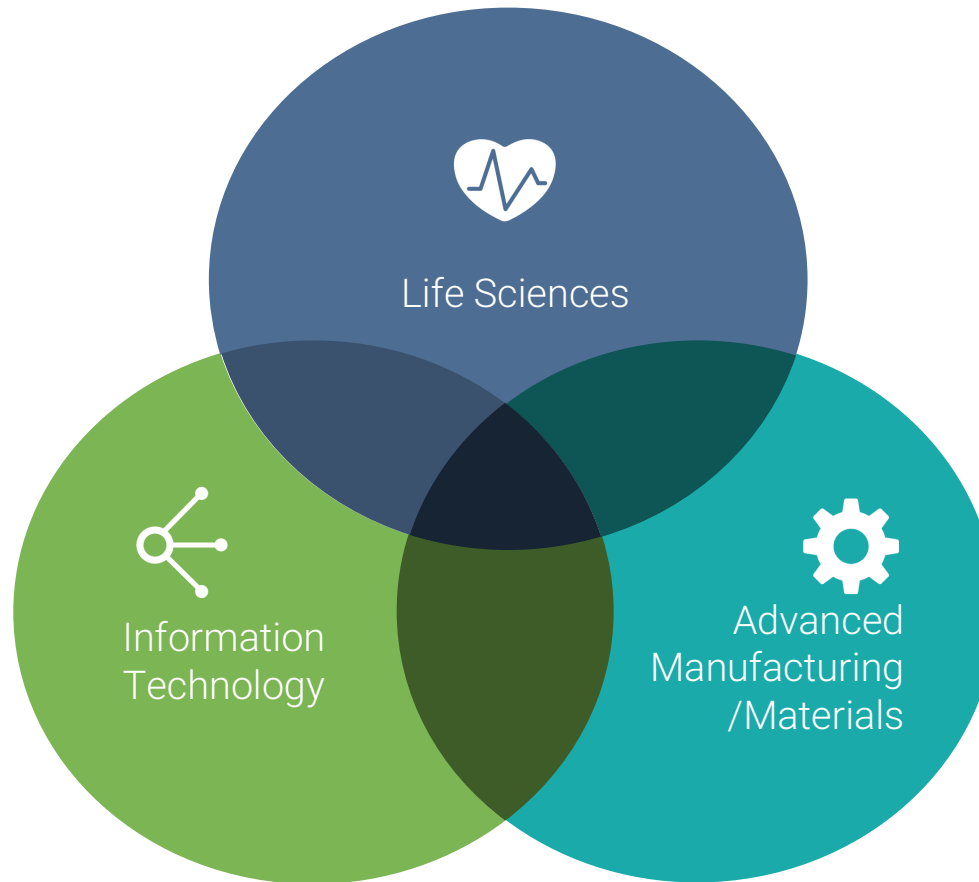


SCRA partners with economic development organizations in the state that share our mission to build South Carolina's technology-driven economy.

SCRA creates connections among industry, academia and entrepreneurs to foster company growth and increase the state's research capacity.

# INDUSTRIES OF FOCUS

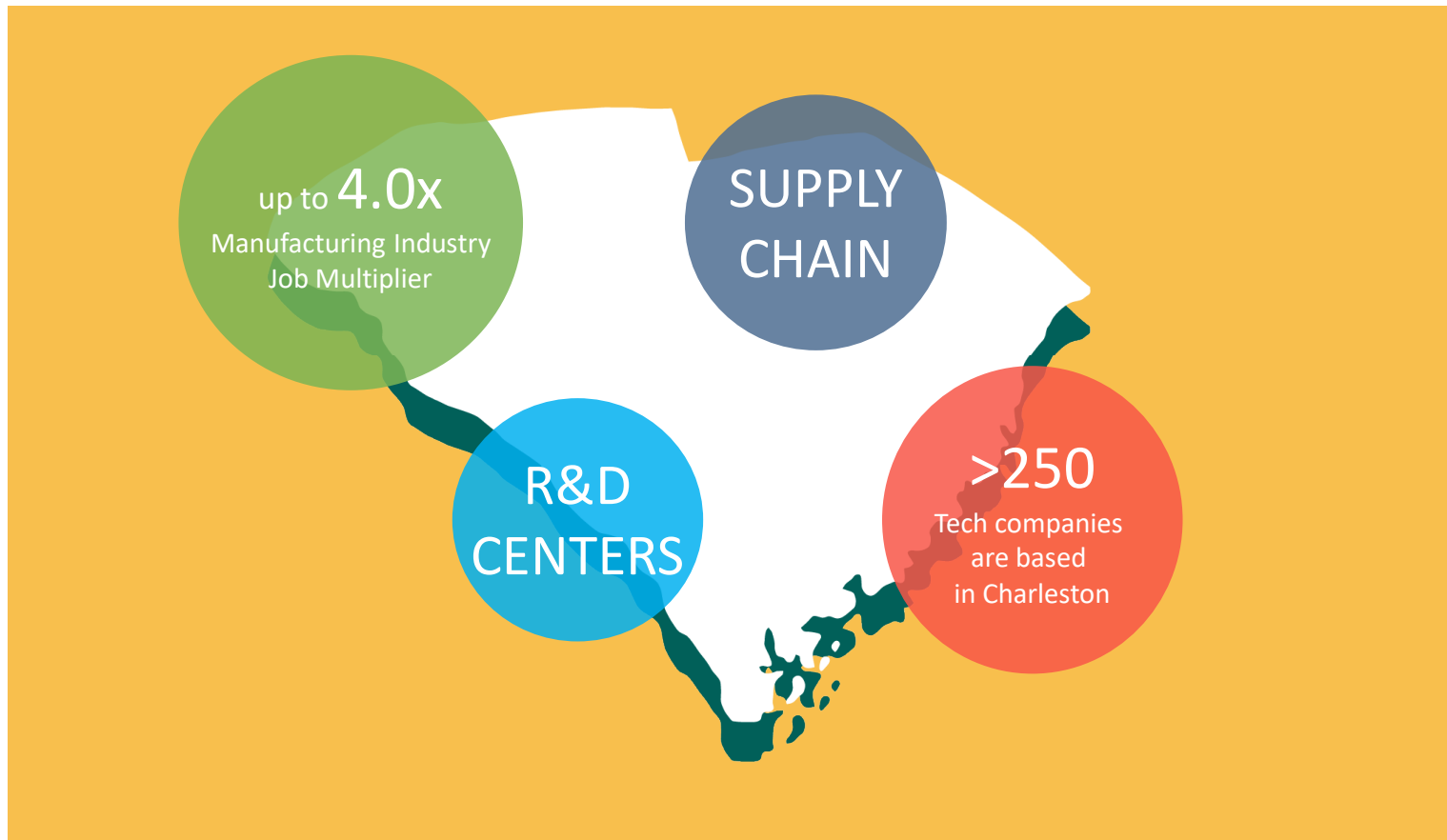
---



# ADDRESSING INDUSTRY NEEDS



# RECRUITING INDUSTRY TO THE STATE



# CASE STUDY: MODJOUL



A global engineering and construction company was looking for methods to increase workplace safety and productivity while reducing workers' comp claims.



SCRA is creating a strategic partnership with Modjoul, an SC Launch Company, whose low-profile SmartBelt is used to provide insight into employee safety and how employees perform at work.



## BY THE NUMBERS: COMPANY RELOCATION

---



19

COMPANIES RELOCATED  
TO SOUTH CAROLINA

2

INTERNATIONAL  
COMPANIES RELOCATED  
TO THE STATE

2

RELOCATED COMPANIES  
WITH OFFICES IN SCRA  
FACILITIES



# FACILITIES

# SCRA INNOVATION CENTERS AND FACILITIES



MUSC  
INNOVATION  
CENTER  
—  
Charleston, SC



DUKE ENERGY  
INNOVATION  
CENTER  
—  
Anderson, SC



USC INNOVATION  
CENTER  
—  
Columbia, SC

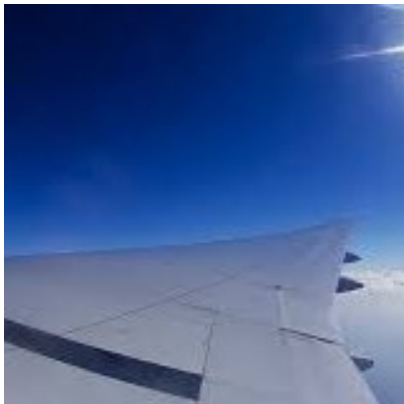


APPLIED  
TECHNOLOGIES  
CENTER  
—  
Summerville, SC

# CASE STUDY: THE MCNAIR CENTER



SCRA provided financial support and up-fits to help USC kick-start the initiative, which grows the innovation economy through aerospace research and innovation.

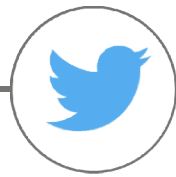


The McNair Center is housed in the USC Innovation Center, which provides space for high-tech manufacturing and collaboration.





[scra.org](http://scra.org)



[@SCRAInnovation](https://twitter.com/SCRAInnovation)



[info@scra.org](mailto:info@scra.org)